

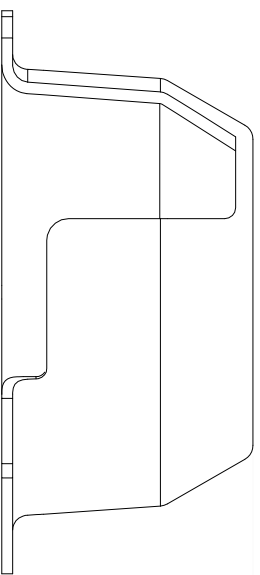
Ø9.80 THRU

3X @ 90°

Ø149.2 PCD

Ø165.1

RELIEF FOR CONNECTOR EXIT
AND ENCODER MOUNTING



73.6

Drawing Scale - 1.00" = 25.4mm

All Dimensions are in mm, tolerance of +/- 0.127mm or +/-0.254 unless otherwise specified

Sheet 1 of 1



British encoder products
Unit 33
Whitegate industrial estate
Tel: 01978 262100
Fax: 01978 262101

DRAWN BY: EPC/BEPC

FULL PROJECT NAME:
Uni Cover

A4 THIRD ANGLE PROJECTION



— REVISION HISTORY —	
Iss.	Description of latest revision :-
A	Dimension Drawing for Website

Date :-

11-9-17